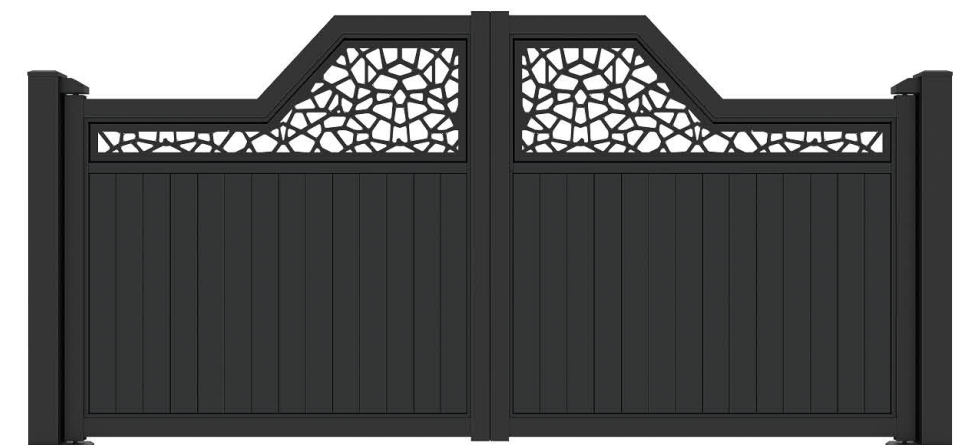
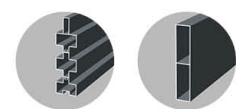




JHR GATE | IHOME
Model Number | S95-SK3211



JHR GATE | IHOME
Model Number | S95-SK3214



JHR GATE | IHOME
Model Number | S95-DK0208



JHR GATE | IHOME
Model Number | S95-DK0209



JHR GATE | IHOME
Model Number | S95-SK3212



JHR GATE | IHOME
Model Number | S95-SK3215



JHR GATE | IHOME
Model Number | S95-DK0210



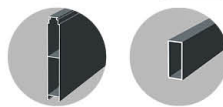
JHR GATE | IHOME
Model Number | S95-DK0211



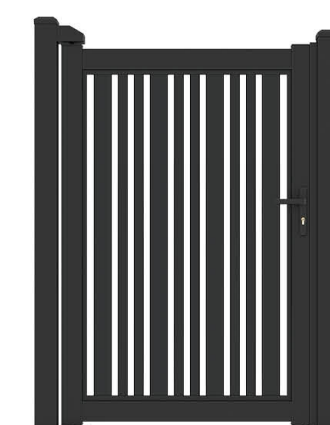
JHR GATE | IHOME
Model Number | S95-SK3213



JHR GATE | IHOME
Model Number | S95-SK3216



JHR GATE | IHOME
Model Number | S95-DK0213



JHR GATE | IHOME
Model Number | S95-DK0215

Swing Gate Motor for Choice

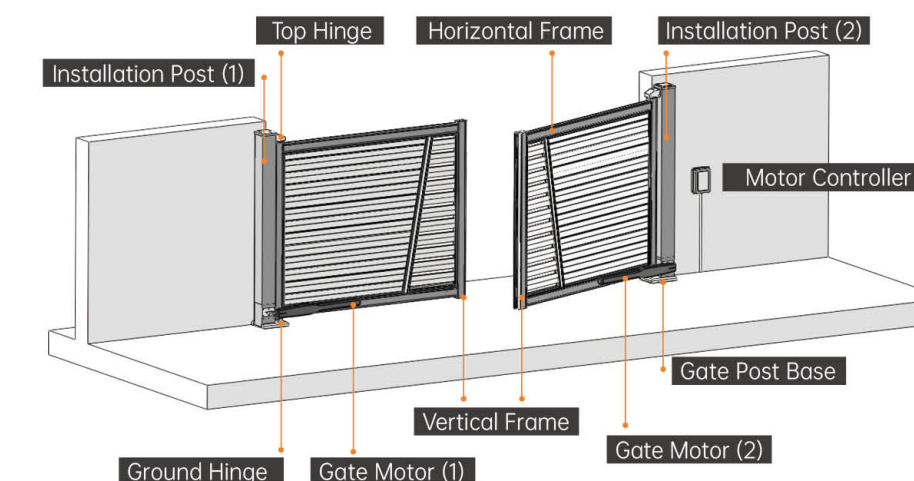


Arm Motor
Arm Motors don't require a flat ground



Ground Motor
Motors Ground motors feature stronger load capacity.

Notes For Swing Gate



Installation Tips:

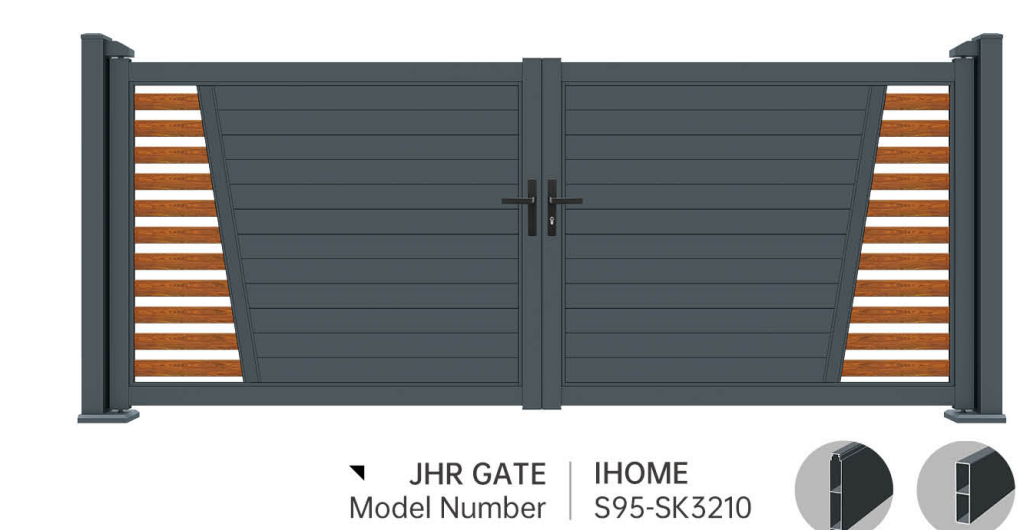
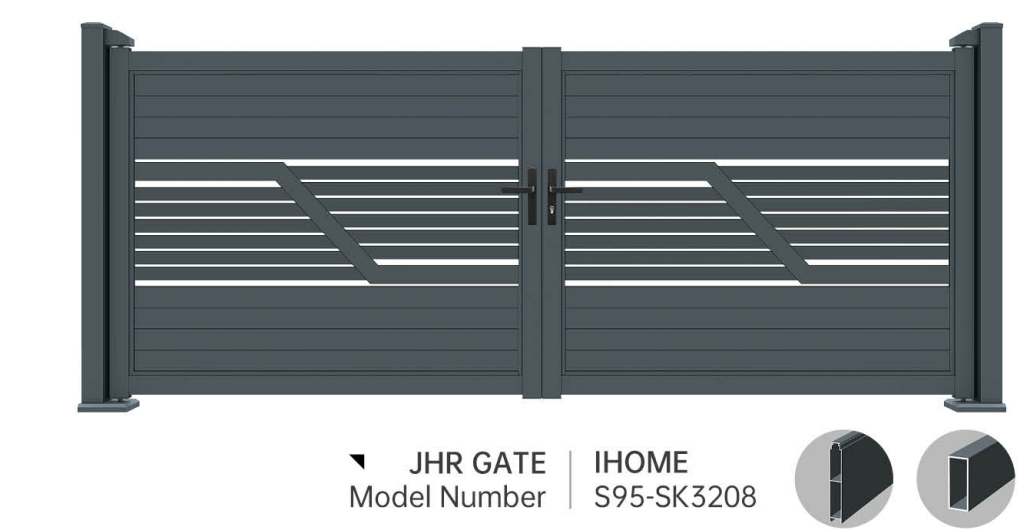
- Determine Installation Positions: Mark the installation positions of the gate posts according to the total length of the gate.
- Construct Foundation: Construct reinforced concrete foundations at the base of each gate post, ensuring both foundations are at the same level.
- Secure Gate Posts: Secure the gate posts to the concrete foundations using expansion bolts, and install and fasten the ground gate hinges.
- Install Gate Body: Insert each section of the gate vertically into the ground hinges of the posts, then fix them to the gate posts with top hinge brackets.
- Install Gate Motors & Electrical Connections: Determine the position for gate motors installation, and install the motors with brackets. Test it manually repeatedly; after confirming normal operation, power on the motor and adjust it to an ideal working condition.
- Notes for Gate Installation Posts: The gate posts are mainly used for quick installation and adjustment of the gate. For oversized or overweight gate bodies, the gate posts must be reinforced before normal use.



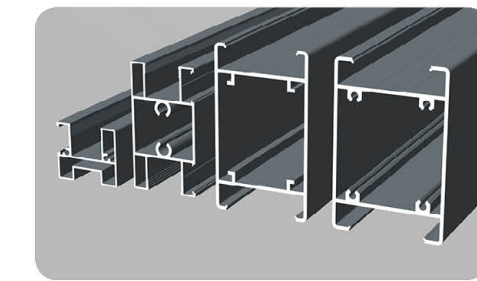
IHOME COURTYARD
SWING GATES
95SYS

CUSTOMIZED MADE
FACTORY DIRECT
QUALITY ASSURED





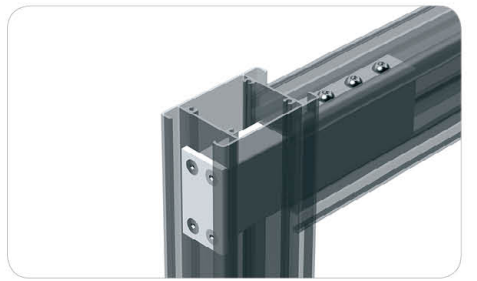
Color Options



Aluminum Extrusion



Ground Hinge



Mortise & Tenon Structure

- Custom Top&Bottom hinges: smooth & quiet.
- Easy installation, optional post mount.
- Easy transport, saves space & cost.

- Industrial aluminum: strong, rust-proof, weather-resistant.
- Durable tight structure with mortise-tenon assembly.
- Custom sizes & styles available.

• Product images shown in this catalog are for style reference only. Actual products may vary by specification. Please contact us for detailed styles and dimensions.
 • Due to printing limitations, colors of product images may differ from the actual products. Please refer to the physical product.
 • Producing one ton of paper consumes nine trees. Please help protect the environment and conserve resources – it starts with you and me.
 • Our company reserves the right of final interpretation of all content in this catalog.

PROFESSIONAL MANUFACTURER of Premium Aluminum Products

Gates | Fences | Pergolas | Carports | Gazebos | Entry Doors



☎ 400-885-6385
 📞 +86-135 4366 9385
 📠 +86-757 8378 7525
 ✉ sales@jhrtech.com
 🌐 www.jhrtech.com (CN)
 🌐 www.jhrgate.com (EN)



CN Web



EN Web